



# CORPORATE REALTY

201 St. Charles Ave., Suite 3811, New Orleans, LA 70170  
504.581.5005 | [corp-realty.com](http://corp-realty.com) | Licensed in Louisiana

**FRENCH MARKET**  
CORPORATION

## Shops of the Colonnade *in the French Market District*

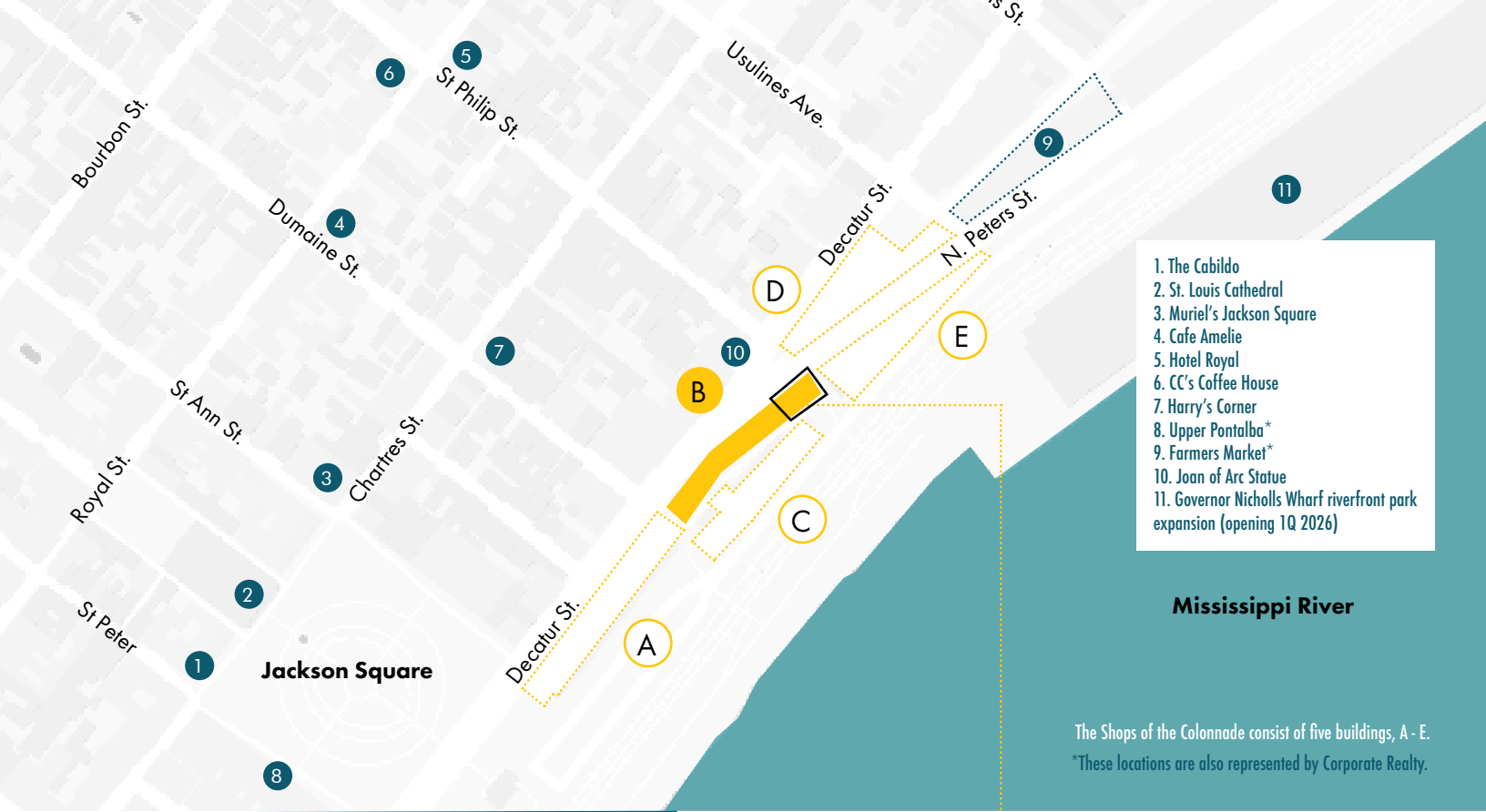
**FOR LEASE | 936-940 DECATUR STREET**

**FOR MORE INFORMATION, CONTACT:**

**Austin Lavin** ccim    [alavin@corp-realty.com](mailto:alavin@corp-realty.com)  
504.581.5005

• **Sydney Anderson** ccim    [sanderson@corp-realty.com](mailto:sanderson@corp-realty.com)  
504.236.7507

**SA** SYDNEY ANDERSON REALTY



1. The Cabildo
2. St. Louis Cathedral
3. Muriel's Jackson Square
4. Cafe Amelie
5. Hotel Royal
6. CC's Coffee House
7. Harry's Corner
8. Upper Pontalba\*
9. Farmers Market\*
10. Joan of Arc Statue
11. Governor Nicholls Wharf riverfront park expansion (opening 1Q 2026)

**Mississippi River**

The Shops of the Colonnade consist of five buildings, A - E.  
 \*These locations are also represented by Corporate Realty.

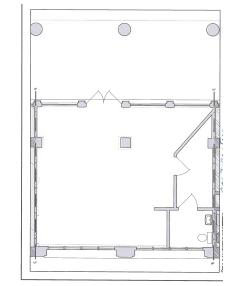
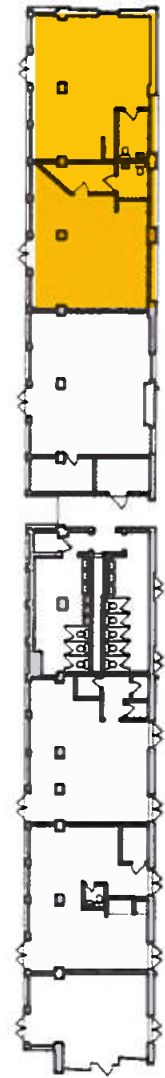
## 936-940 DECATUR STREET

Establish your business at the center of one of New Orleans' most iconic and vibrant districts. This high visibility, showcase retail space that can be leased as one unit or divided into two separate units is located across from the renowned Joan of Arc Statue. Surrounded by classic French Quarter architecture and immersed in the area's lively ambiance, the site boasts exceptional foot traffic from both locals and tourists year-round. This is an exceptional space that blends charm with commercial appeal. This site is located near a primary access point to the expanded riverfront park, a scenic stretch along the Mississippi River.

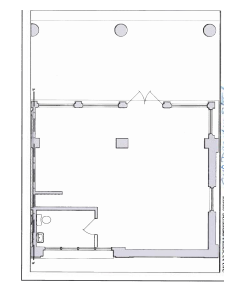
- 936  
**SIZE:** 684 sf (approx.) **RATE:** \$5,700.00 per month\*\*
- 940  
**SIZE:** 700 sf (approx.) **RATE:** \$5,833.33 per month\*\*
- 936 + 940  
**SIZE:** 1,384 sf (approx.) **RATE:** \$10,380.00 per month\*\*

**DELIVERED:** As is  
**MARKETED FOR LEASE:** April 7, 2026

\*\*Inclusive of property taxes, insurance, and common area maintenance  
 + All leases include a Percentage Rent component.



936  
684 SF



940  
700 SF

**FRENCH MARKET CORPORATION**

The French Market District is comprised of the shops of the Upper Pontalba, Shops of the Colonnade, the Craft Bazaar, the Farmers & Flea Markets, Oscar Dunn Park, and the Moon Walk. The district is managed by the French Market Corporation.